

GINOWAN CITY NEWSLETTER

1-1-1 NODAKE | ☎ 098-893-4119
 @GINOWANCITY.MULTILINGUAL



We have updated
our LINE account!

Be Part of Our Community!

Join Ginowan City's Official LINE group!

Set your language and receive information about Ginowan City, including information during emergencies

Improved for your convenience

NEW FEATURES in
Ginowan City's
Official LINE Account!



1 Road Damage Report

Now you can report road damage and other issues directly through LINE.

2 Garbage Collection

Set residential area to receive garbage collection notifications the day before or on the day.

3 Multilingual Support

Language settings added for easier use by foreign residents.

4 Disaster Feature Upgrades

Digital disaster drill feature for emergency response. Search for emergency shelters near you.

New Design!

Register Today

Join with QR code

Open LINE, go to Home > Add Friend, tap the QR code icon, and scan the QR code below.



Join with ID search

Open LINE, go to Home > Add Friend, tap the search icon, and enter the ID below.



@652ekjpt

Population as of April

Total Population	100,324 (+292)
Total Households	48,586 (+315)
Foreign Residents	2,370 (+191)
Nationalities	54(-1)

CHILD BENEFIT RENEWAL PAPERWORK DUE BY END OF JUNE



If you are a recipient of Child Benefit and fall under any of the following categories, you must submit a Status Report form in order to continue receiving the benefit. The form will be mailed to your address in early June.

If you fail to submit the Status Report form by the end of June, you will not be able to receive child allowance after October.

You need to submit a Status Report form if

1. you do not live at the address on your resident registration certificate (juminhyo) due to spousal violence, etc.
2. your child or children, who are 18 years old at the end of the fiscal year, live at a different address.
3. you are raising a child whose name is not entered in the family register.
4. you are in the process of divorce negotiations and living separately from your spouse.
5. you are a corporation or facility (including foster parents) who receives child benefit as the legal guardian of a minor.
6. you have received a notice for submitting the Status Report form.

Deadline: June 30 (Monday)

Where to Submit: Children and Families Division, Window #8, 2nd Floor, Ginowan City Office, 1-1-1 Nodake, Ginowan City

Hours: 08:30-12:00, 13:00-17:15 (Monday - Friday, closed on Public Holidays)

*For inquiries, please contact the Children and Families Division at 098-893-4422

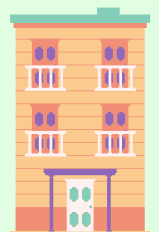
Notice: June Newsletter Break

Please note that there will be **no newsletter issued in June**. We'll be **back with our regular updates starting in July**. Thank you for your understanding. We look forward to sharing more news with you soon!

Applying for Ginowan Municipal Housing

Applications open for Iribaru and Aichi Municipal Housing

Applications are accepted **between June 9 (Monday) and June 20 (Friday)**. Applicants must meet the following requirements:



1. Must be a registered Ginowan resident as of January 31, 2025 and continues to reside in the city
2. Is currently living together with family OR has family with whom he/she intends to live*
3. Is experiencing housing insecurity
4. Has paid all municipal taxes in full
5. Household income is lower than:
 - ¥158,000 for regular households
 - ¥214,000 for the elderly or those with physical disability, etc.

*If you are single, please contact the Architectural Division for more information.

To apply, please visit the Architectural Division on the 3rd floor of the city office or contact us at 098-893-4420.

NOTICE OF WATER BILL REDUCTION FROM JUNE 2025 TO JANUARY 2026

To ease the impact of rising prices, Ginowan City will reduce basic and excess water charges by 23 yen (excluding tax) per cubic meter for eight months.

***No application is required to receive this reduction.**

• Eligibility:

Customers with household, business, or group-use contracts with Ginowan City Water and Sewer Bureau

• Duration:

June 2025 to January 2026 meter readings (8 months)

• Amount:

23 yen/m³ (excl. tax) reduction

Inquiries: Water and Sewer Bureau ☎ 098-892-3351



*Water usage and household size are based on estimates.

Comparison Table Based on Monthly Usage (Tax Included)

Water Usage (m ³ /month)	Charge Before Reduction	Charge After Reduction	Reduction Amount
8m ³ (Single-person household)	¥1,240	¥1,040	¥200
10m ³ (2-person household)	¥1,690	¥1,440	¥250
15m ³ (2-3 person household)	¥2,810	¥2,430	¥380
20m ³ (3-4 person household)	¥3,920	¥3,420	¥500
30m ³ (4-5 person household)	¥6,270	¥5,510	¥760
40m ³ (5-6 person household)	¥8,720	¥7,710	¥1,010

Light Motor Vehicle (Kei Car) Tax for Fiscal Year 2025: Due on June 2

- The Light Motor Vehicle Tax notice for FY2025 has been mailed out.

Please make sure to complete your payment by the **due date of June 2, 2025.**

You can check the applicable tax rates by scanning the QR code above or visiting our official website <https://www.city.ginowan.lg.jp/soshiki/somu/6/1/1/25/05.html>

- Tax Reduction for Eligible Vehicles

A tax reduction may be available if a Kei car is used by a person with a physical disability who meets specific conditions. To apply, please submit the required documentation by the payment deadline.

Inquiries: Tax Division ☎ 098-893-4411 Extension 1811-1814.



Fiscal Year 2024 Flat-Rate Resident Tax Subsidy for Low-Income Households



🌟 **Eligible households** will receive a **¥30,000 subsidy** under national economic relief measures.

+ **Extra ¥20,000 per child under 18** (born after April 2, 2006).

✓ Eligibility:

- Households in which all members are either exempt from resident tax, pay only the flat-rate resident tax, or a combination of both, for Fiscal Year 2024.
- Residents must be registered as residents of Ginowan City as of December 13, 2024.

✗ Not Eligible:

1. Households comprising entirely of dependents of individuals paying resident tax.
2. Any member of the household did not file a tax return despite having taxable income.
3. Households receiving this subsidy in another municipality.
4. Any household member has filed for exemption under a tax treaty.

📅 **Application Deadline:** Thursday, July 31, 2025
(**Child Supplement Deadline: ONLY for families with newborns born between December 14, 2024-July 31, 2025:** Wednesday, August 13, 2025)

📄 How to Apply:

- **Forms will be mailed out to eligible households** starting late April. Return by mail, in person, or online (see QR code).
- **New residents or late filers:** Download or pick up an application form from the city website or benefit counter. Submit with necessary documents.

Inquiries: Ginowan City Benefits Call Center ☎ 050-3354-5104 (Monday - Friday 8:30-17:00)

Light Motor Vehicle (Kei Car) Tax Payment Certificate Will Be No Longer Needed For Car Inspection

Starting April 2025, the Kei JNKS system is scheduled to be implemented, which eliminates the necessity of submitting a Kei car tax payment certificate each time you need to have your Kei car inspected by a mechanic.

As a result, **beginning in Fiscal Year 2026, we will stop sending direct debit notices and inspection-related tax payment certificates (postcards).**

If you are using direct debit, please confirm the payment by checking your bankbook or transaction history.

For inquiries, please contact the Tax Payment Division at ☎ 098-893-4411 Extension 1912-1914.

Please note that the Kei JNKS system applies to Kei cars only. **You are still required to show your tax payment certificate for small motorcycles.**

"Universal Childcare Access Program" Launching July 2025!

😊 Starting in July 2025, Ginowan City will begin a pilot of the Universal Childcare Access Program, offering flexible childcare support to all families – regardless of employment status – as part of a national initiative set for full rollout in 2026.

😊 Who Can Use the Program?

Children aged 6 months to under 3 years who do not attend licensed daycare and live in Ginowan City.

🕒 Usage Limit:

Up to 10 hours per month

📄 How to Use:

1. Submit an application to the Childcare Division to receive eligibility approval.
2. Apply for an interview with a participating facility.
3. Reserve the days when you want to use the service.
4. Use the service on the reserved day.

- **Fee: Approximately ¥300 per visit**

🔧 **Participating facilities are currently being finalized. Updates will be posted on the Ginowan City website as available.**

Inquiries: Childcare Division (Hoiku kodomo-en-ka) ☎ 098-893-4504

FC RYUKYU VS Matsumoto Yamaga F.C.



応援をもっと楽しく! もっと身近に!

FC RYUKYU FANCLUB 2025

ファンクラブ詳細はこちら

⚽ **FC Ryukyu vs Matsumoto Yamaga FC- Soccer J League Match**

June 14 @ 18:00 @ Okinawa Prefectural General Athletic Park Athletics Stadium

Free invitation for Ginowan City residents

Scan the QR code to add FC Ryukyu on LINE and access a free invitation to this match.