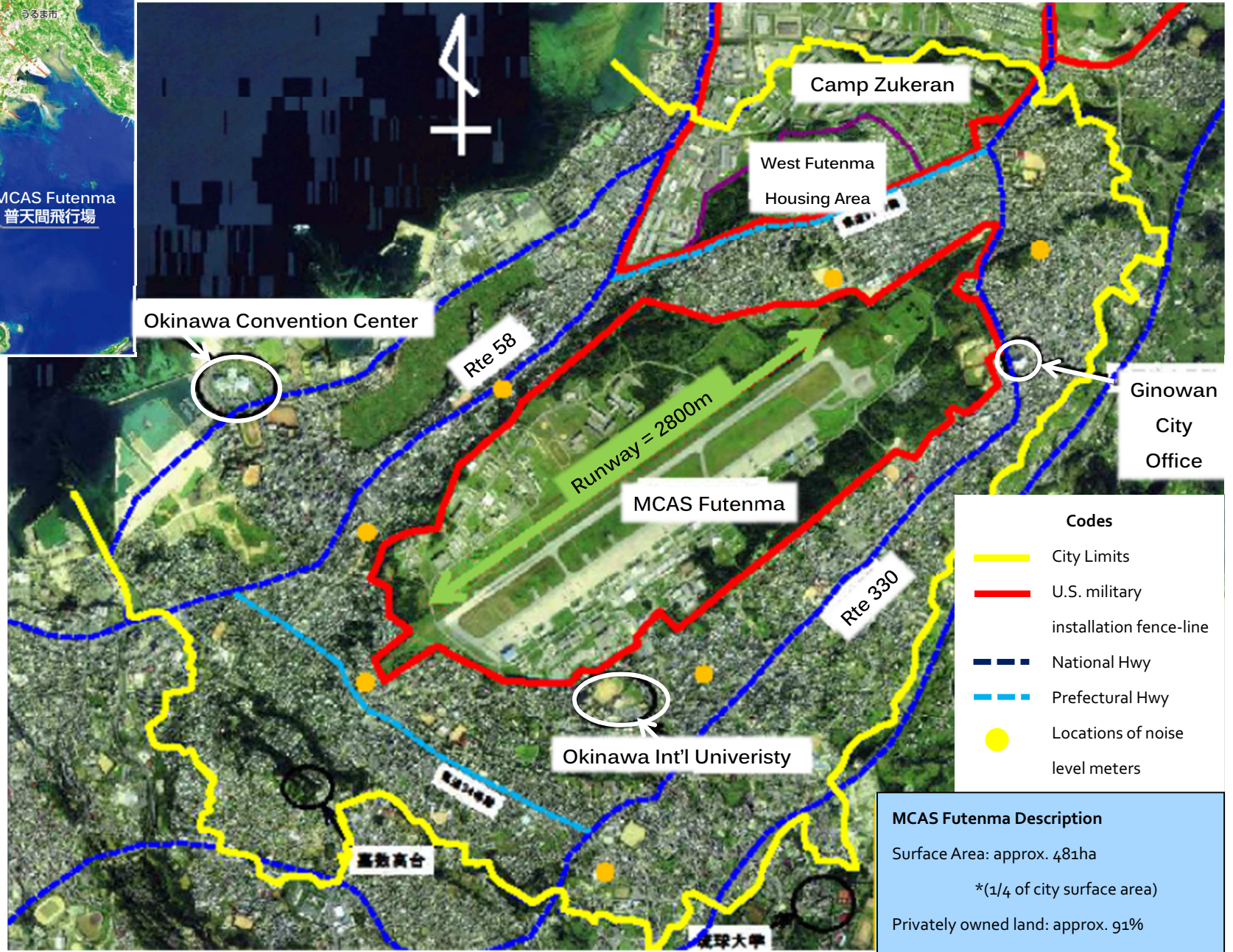


Marine Corps Air Station Futenma is surrounded by approximately 120 public facilities including schools. Ginowan City residents are constantly exposed to base-related adversities such as the risk of aircraft-related accidents and noise pollution. The city of Ginowan is located in the south-central part of Okinawa and is considered a key location in means of land transportation, for it connects the southern and central parts of the island. Moreover, Ginowan City holds a high property value due to the flat grounds, which are rare in the area. Unfortunately, MCAS Futenma, located in the center of Ginowan, has caused an awkward city-layout and is detrimentally affecting the everyday-lives of local residents as well as the city's economy.



Affecting everyday-lives of local residents