

MCAS Futenma: Located in the **Center** of the City

~ Refocusing on the Main Agenda of the Land Return Agreement: Alleviating Danger and Burden ~



Atsushi Sakima
Mayor,
Ginowan City

Marine Corps Air Station Futenma has been present in its current location, in the center of Ginowan City, since the end of the war 70 years ago. The air station, which consumes 25% of the total city surface area, poses a danger and daily life impairments such as noise pollution. The location of the air station is a crucial hindrance for the city's urban functions, traffic system, and overall development, disturbing the city's financial growth.

Although the MCAS Futenma base which is said to be the "world's most dangerous base", the return of the land return has been agreed upon in the SACO Agreement, but has yet to be implemented and the Ginowan City residents are compelled to take on many base-specific burdens. The expeditious elimination of the dangers and burdens deriving from this air station has been a pressing issue for the city.

We protested and requested for the numerous incidents of the aircraft operating out of MCAS Futenma, as well as delivering the unified voice and opinions of the local residents which is strongly insisting upon on the return of the land and the mitigation of base.

Also, the 9 organizations within the assembled city are protesting the accident which occurred when a window belonging to a U.S. military helicopter fell onto the Futenmae Daini Elementary School on December, 2017. We have worked with citizens towards the realization and alleviation of the risks and burdens on the base, which is the origin of the MCAS Futenma early return and return agreement.

Additionally, night time exercises and flight circling over residential area for long time period, have seriously affected the lives of civilians on a daily basis in the form of noise pollution and TV interference reception disorder. Countermeasures that citizens can feel are urgently required.

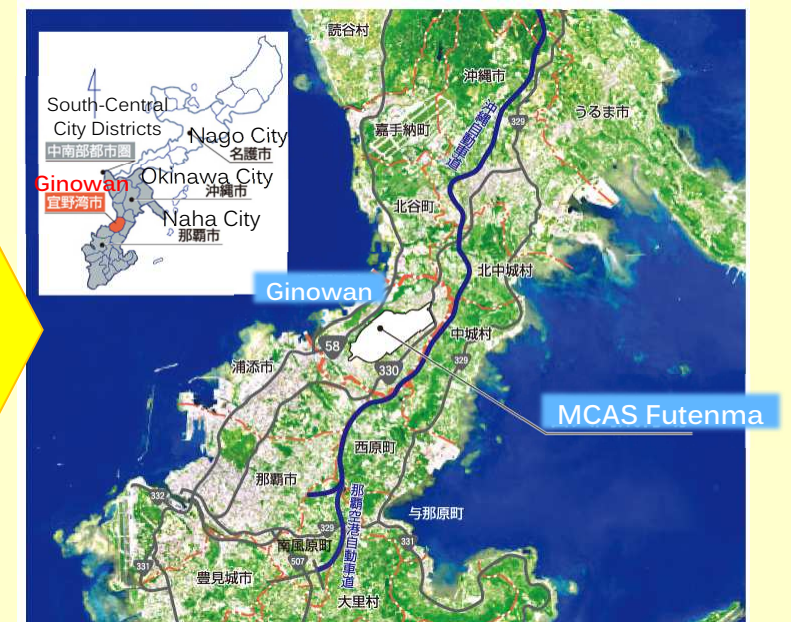
We continue to request not only for the country and prefecture but also for the U.S. government, based on the people's willingness to "never allow immobilization", as well as without forgetting the origin of the return agreement. Taking all measures, the Ginowan City intends to continue working to as well as closure of MCAS Futenma at the earliest possible date and return of the land, which is citizens' desire, suspend operation within 5 years (by February 2019), achieving our goals to permanently close the air station and to mitigate afflictions in the meantime.

Ginowan City Military Base Affairs and Policy
March 2018

MCAS Futenma: Located in the Center of Greatly Affecting Daily Lives and Economy



➤ Location of Ginowan City

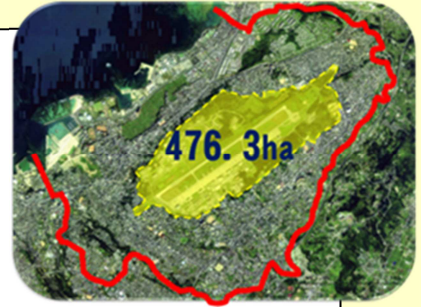


Ginowan city from above



MCAS Futenma Surface Area

476.3ha



MCAS Futenma is located in the center of Ginowan City and consumes 1/4 of the city's total surface area (approx. 19.8km²). Additionally, with Camp Foster taking up another 1.059km² in the northern part of the city, approximately 30% of the total city's surface area is occupied by U.S. military installations.

City's Population Density (as of Jan. 2018)

Approx. 4,968/km²

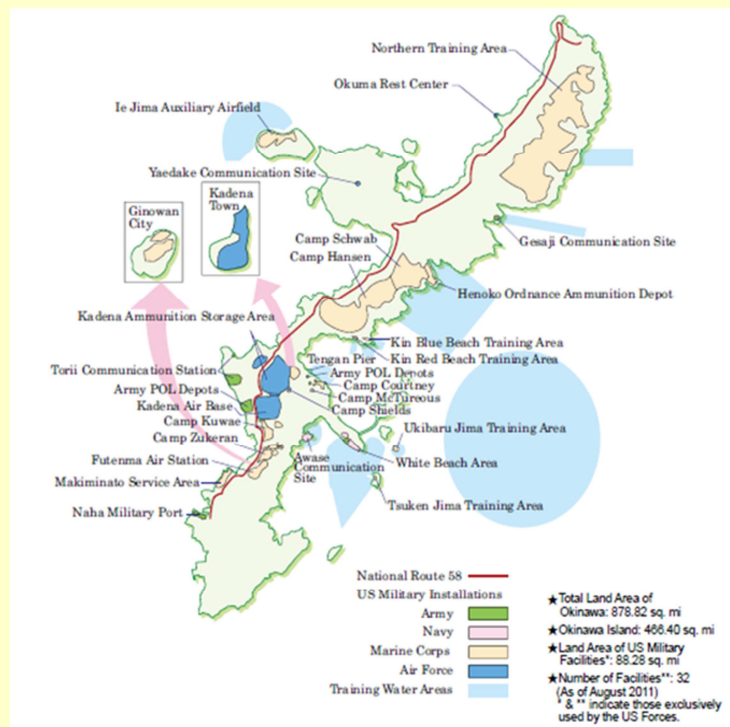
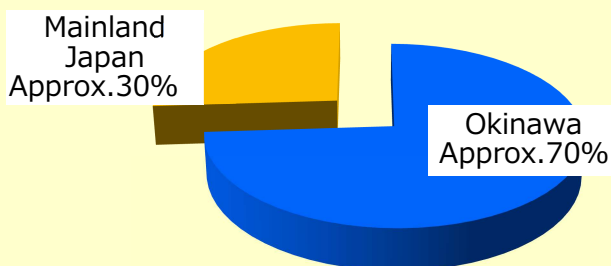
Excluding Base Surface Area...

Approx. 7,038/km²

U.S. Military Facilities on Okinawa

Okinawa makes up a mere 0.6% of Japan, but Approx. **74%** of the total surface area in use by the U.S. military in Japan is located in Okinawa.

The U.S. Military in Japan



Number of Times Noise Was Detected

10,947 (Fiscal Year 2016 Ue-Ojana Dist.)

In fiscal year 2016, aircraft noise was detected 30 times in a single day by the noise-level meter located in the Ue-Ojana Area, where it is known to be one of the noisiest areas in Ginowan City. Citizens around the base are left with no option but to live under these burdensome living conditions.



Highest Recorded Noise-Level

116.7dB (Oct.19, 2016 Ue-Ojana Dist.)

Night time Noise-Level

99.7dB (22:34 Mar. 2, 2017 Ue-Ojana Dist.)

The highest recorded noise-level during the fiscal year 2016 was 116.7dB-a noise-level said to be a higher level that one would experience standing 2 meters away from an automobile horn. Moreover, although limited by the U.S.-Japan agreement, night time flight activity is still vigorous.

Noise-Level	Noise-Level is equal to...
120dB	Next to an active aircraft engine
110dB	2 meters away from an automobile horn
100dB	Under a passing train
90dB	Inside an active factory



Accidents Involving MCAS Futenma Aircrafts

135 Total includes accident reports from the time of Okinawa's return to the Mainland in 1972 until March 2018.

There is an annual average of 2.9 aircraft mishaps involving aircrafts stationed at MCAS Futenma. Considering the location of the air station- in the center of a densely populated city, one accident can be catastrophic.



22 years since the SACO Agreement...

MCAS Futenma Land Return Stands at a Halt

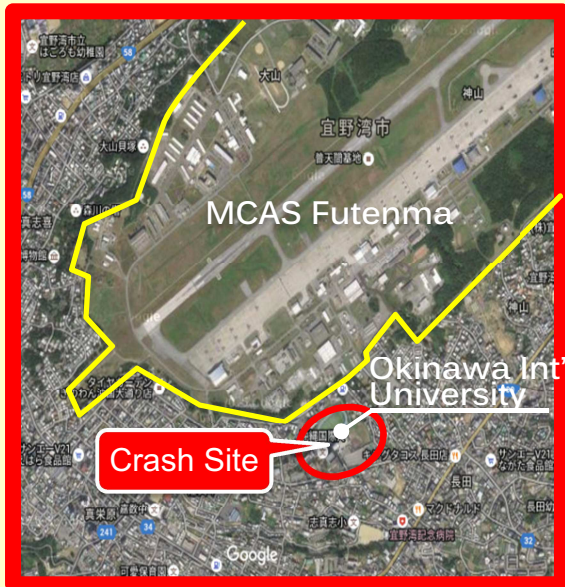
Jun 1945	U.S. Forces seize land and begin construction of MCAS Futenma in preparation for the Mainland battle
Dec 1996	Agreement to “return Futenma Air Station within the next five to seven years, after adequate replacement facilities are completed and operational” based upon SACO Final Report.
Aug 2004	U.S. military helicopter crash at Okinawa International University
May 2006	Agreed to make 2014 the completion goal for the MCAS Futenma relocation site under U.S.-Japan Roadmap for Realignment final report.
Jun 2011	Revised the 2014 relocation goal and re-pledged to complete the relocation as soon as possible. (“2+2”)
Oct 2012	Deployment of MV-22 Ospreys begins (completed Sept. 2013)
Apr 2013	Japanese and U.S. governments agree to a new relocation goal of “2022 or later”
Feb 2014	Okinawa governor and Ginowan City mayor petition to the Government of Japan to have the base closed and relocated within the next 5 years
Feb 2014	The first MCAS Futenma Burden Reduction Promotion Meeting
Aug 2014	15 KC-130's, aerial-refueling aircrafts stationed at MCAS Futenma, are relocated to Marine Corps Air Station Iwakuni
Jul 2017	Returned approximately 4ha of the eastern part of MCAS Futenma.
Dec 2017	A Window from a U.S. military helicopter fell onto the Futenma Daini Elementary School

Incidents of Aircrafts operated out of MCAS Futenma (Since Dec. 2016)

Dec.13 2016	MV-22 Osprey made a crash-landing on the water in Nago city
Dec.13 2016	MV-22 Osprey faults landing gear
Jan.11 2017	CH-53 Helicopter had mechanical failure on the landing gear
Jan.20 2017	AH-1Z made an emergency landing in Uruma city
Jun.1 2017	CH-53 Helicopter made a precautionary landing in Kume Island
Jun.6 2017	MV-22 Osprey made a precautionary landing in Ie Island
Jun.10 2017	MV-22 Osprey a precautionary landing in Amami Airport
Aug.5 2017	MV-22 Osprey smashed into a ship and eventually slid into the ocean off the coast in Australia.
Aug.29 2017	MV-22 Osprey made a precautionary landing in Oita Prefecture
Sep.29 2017	MV-22 Osprey made a precautionary landing in New Ishigaki Airport
Oct.11 2017	CH-53 Helicopter made an emergency landing in Higashi Village after an inflight fire
Dec.13 2017	A Window from a U.S. military helicopter fell onto the Futenma Daini Elementary School
Jan.6 2018	UH-1Y Helicopter made an emergency landing in Higashi Village after an inflight fire
Jan.8 2018	AH-1Z Helicopter made a precautionary landing in Yomitan Village
Jan.23 2018	AH-1Z Helicopter made a precautionary landing in Tonaki Village
Feb.8 2018	Part of an MV-22 Osprey washed ashore on beach in Uruma city

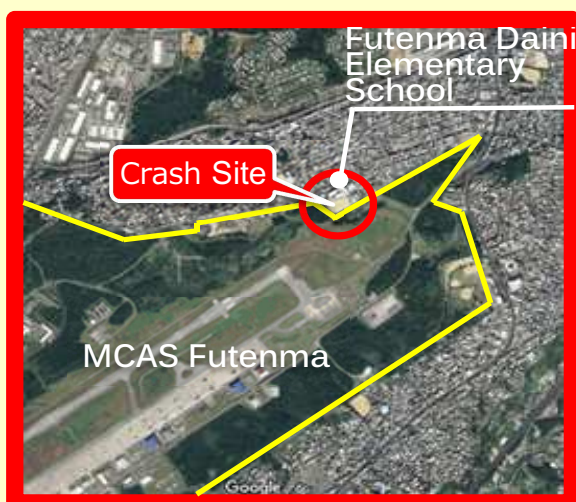
U.S. Military Helicopter Crash at Okinawa International University

On Friday, August 13, 2004, at around 2:15PM, a CH-53D Helicopter operated out of MCAS Futenma crash landed into the main building of Okinawa International University. The helicopter went up into flames causing a major incident.

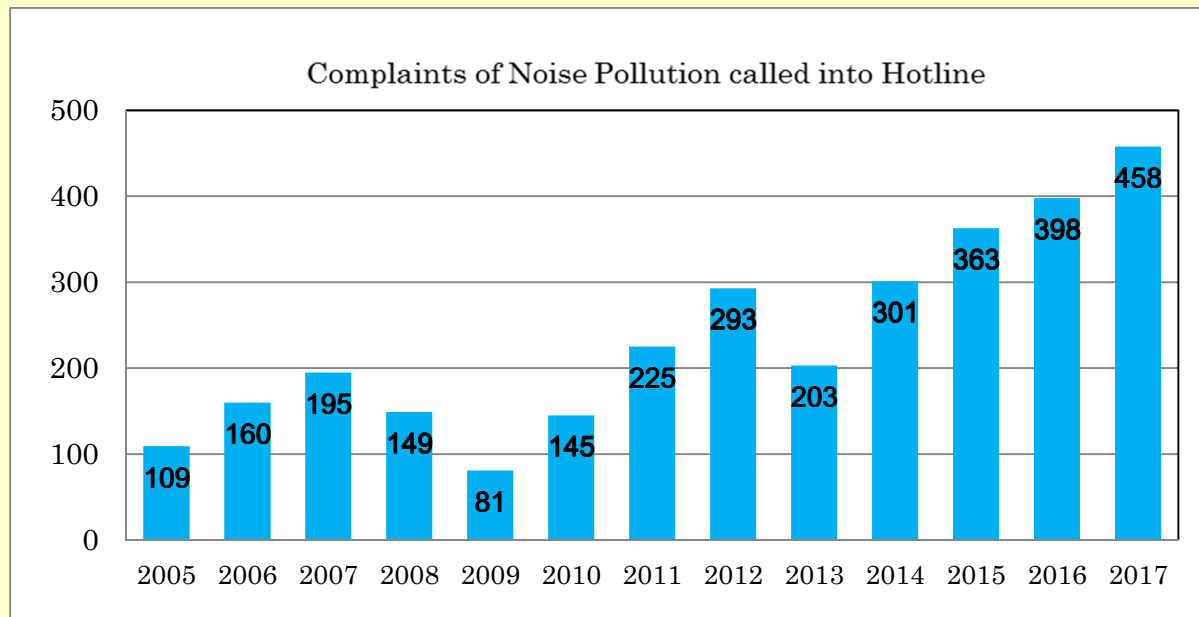


Accident of the Window falling from the U.S. military Helicopter onto Futenma Daini Elementary School

On Wednesday, 13th December 2017, around 10:25 AM, a serious accident occurred in which a window fell off a CH-53 Helicopter that belongs to MCAS Futenma and landed on a school athletic field of the Futenma Daini Elementary School. The 7.7-kilogram window fell right in front of students when they were in the physical education class. The marines insisted that their helicopters had avoided the school, protests were held in response to this accident but the helicopters were continuing to fly over the school area a month after the accident.



Multiple complaints to the Hotline Regarding Noise Pollution



Ginowan City has established a hotline to accommodate complaints made outside of our office hours. The Hotline is an automated messaging system which staff will review the following morning and relay any messages to the mayor, U.S. military and Okinawa Defense Bureau. In the case that numerous complaints are made about the same topic, the city directly petitions to the appropriate entities.

Actual Calls (translated) Made to the Hotline

Feb.22, 2018 14:31(Aragusuku Resident- Female)

The noise from the jets are very loud again today. This is terrible burden for us, which continues to affect people who work from their home, families who have children and sick family members, and elders in this area.

Mar.20, 2018 22:20(Isa Resident- Male)

U.S. aircraft are flying constantly and it is so loud. I cannot sleep, please do something. I am afraid to consider when the aircraft has an accident in this area.

Mar.23, 2018 09:05(Nodake Resident-Male)

The night time noise pollution levels are really terrible lately. I am trying to go to bed by 22:00 because I am old, but when I fall asleep I hear the noise and it keeps me awake. I am have called and complained about it so many times but have yet to see improvement.

April.3, 2018 22:14 (Kyuna Resident- Female)

The helicopters have been flying after 22:00hrs. I hear the engine noise too. It makes me worry when aircrafts flying suddenly in the middle of the night. Let them keep their promise to not conduct flights after 22:00.

April.25, 2018 15:50 (Ginowan Resident- Male)

I moved to the Ginowan city 15 years ago. The noise pollution levels are really terrible lately and they conduct flights until 23:00hrs some nights. Why is it only the Ginowan citizens that have to bear this burden. What do they think about Okinawan people.

The 9 Organization Joint Statement

Regarding a return to MCAS Futenma, not only the administrative-only efforts, but included are the 9 organizations within the assembled city which are protesting and requesting resolution. We have worked with the citizens towards the realization and alleviation of the risks and burdens surrounding the base, which is the origin of the MCAS Futenma early return and return agreement.

Participating Organizations:

- Ginowan City
- Youth Assn.
- Head of Districts
- Women's Assn.
- Board of Education
- PTA Assn.
- Ginowan City Council
- Commerce and Industry
- Elder's Assn.

Based on the night time noises pollution

On November 2015 : Upon receiving over 100 noise complaint calls of the Night time noise pollution in November 2015, the 9 organizations within the city assembled to voice the opinions of the local residents which are protesting and requesting the earliest possible closure and return date of the base. A joint statement and petition was submitted to the Japanese government and other related political parties.



Based on the accident of window falls onto the grounds of the Futenma Daini Elementary School

On December 2017 : On December 13th, After a serious accident which occurred when a window belonging to a U.S. military helicopter fell onto the Futenmae Daini Elementary School, the 9 organizations within the assembled city and PTA of the Futenmae Daini Elementary School are protesting to stop flying above all school facilities in the city area as well as the closure of MCAS Futenma at the earliest possible date and return of the land to solve the root cause of these arising issues.



Agenda at MCAS Futenma Burden Reduction Promotion Meeting

“The MCAS Futenma Burden Reduction Promotion Meeting” which consists of the Japanese government, the Okinawa prefecture and Ginowan City is continuously being held accountable for the closure of MCAS Futenma at the earliest possible date and return of the land to solve the root cause of these arising issues, as well as realization of the agreement to cease all operation MCAS Futenma in the next 5 years and the alleviation of these risks and burdens. One of the achievements, 15 KC-130's aerial-refueling aircrafts stationed at MCAS Futenma, are relocated to Marine Corps Air Station Iwakuni.

【Main Discussion Topics】

- To cease all operations on MCAS Futenma in the next 5 years and the alleviation of the related risks and burdens.
- 12 Ospreys dispositions to be replaced from Okinawa
- Fundamental revision and addition to the status of Forces Agreement.

Besides that, discussions are underway to reduce the burden on MCAS Futenma.



The Ginowan City Project

It has been more than 20 years since the U.S. and Japanese governments agreed to return the MCAS Futenma land, an overloaded base burden which has remained unchanged to the Ginowan citizen. We visited the United States to deliver the unified voice and opinions of the local residents, which is; we the Ginowan citizens must prevent the air station from permanently establishing itself in its current location, as well as make efforts with a sense of crisis and realize as soon as possible to eliminate the risk of MCAS Futenma and reduce the base burden until return of the land. We exchanged opinions with the government officials of the State and Ministry of Defense, the counselors, the Congressmen, the think tank, to share the necessity of the earliest return of the land. We reaffirmed that both Japan and the United States should cooperate and work toward the return of the land. In addition, we showed our propose project for Studying Abroad for a Middle School in the city who will work from the viewpoint of human resource development looking at the site use after the return of the land. We requested the U.S. side for cooperation to meet with the U.S. government officials and visit the government facilities when it happens.



【April, 2016】

Mr. Sung Kim
Special Representative for
North Korea Policy and
Deputy Assistant Secretary
for Korea and Japan,
Department of State

Mr. Joseph Young,
Director, Office of
Japanese Affairs,
Department of State



【October, 2017】

Mr. Mark Lambert
Director, Office of
Korean Affairs,
Department of State

Ms. Julie Chung
Director of Japanese
Affair,
Department of State



【October, 2017】

Senator Dan Sullivan



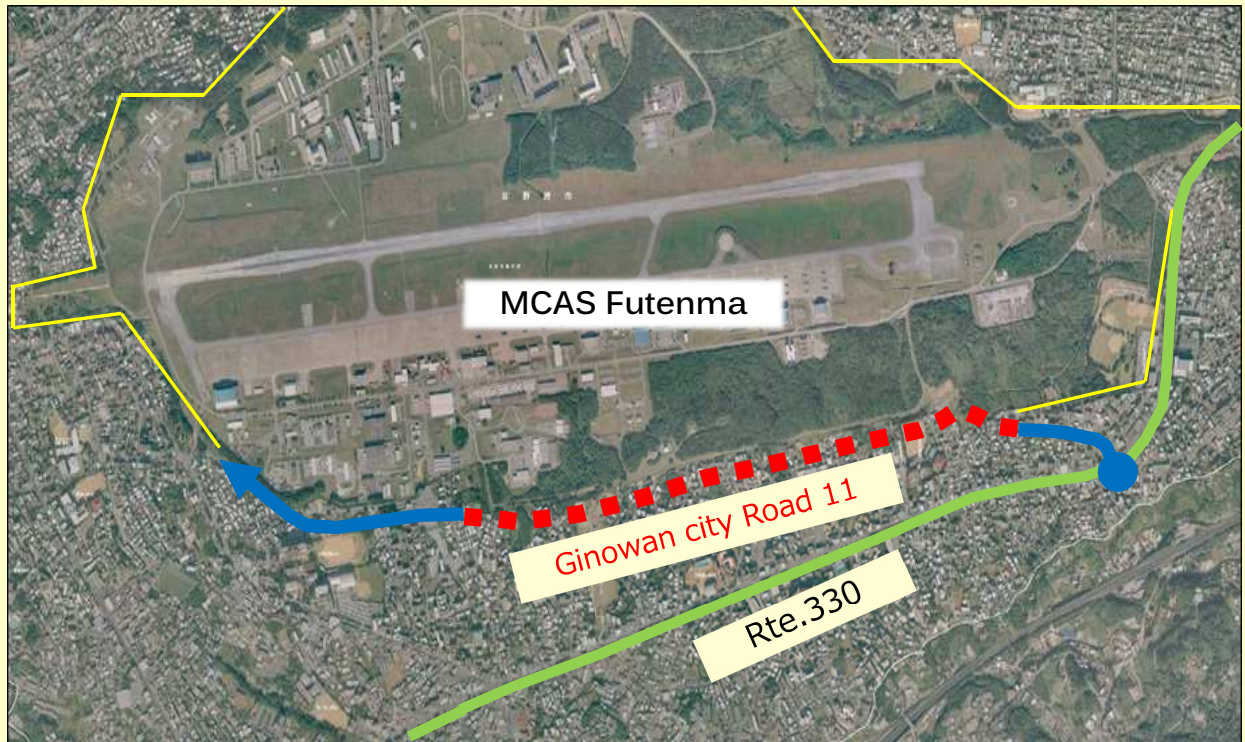
【October, 2017】

Senator Mazie K. Hirono

6Main Points of the Joint Statement:

1. To avoid the permanent placement or prolonged usage of MCAS Futenma, and realize its closure and return as soon as possible.
2. To confirm at an early time the date for the return of MCAS Futenma upon the sincere consultation between Japanese and the US Governments.
3. Until the return of MCAS Futenma is realized, To increase efforts by Japanese and the US Governments in eliminating the dangers of MCAS Futenma and mitigating the burdens of bearing the military base.
4. To relocate MV-22 Osprey stationed in MCAS Futenma to another base.
5. To respect "Aircraft Noise Abatement Countermeasures at Futenma Air Station" agreed between Japanese and the US Governments and to cease all night flight activities as well as circular flights above residential areas which essentially have great impact on the citizens' life.
6. To assure commitment to recurrence-prevention of the incidents of the aircraft stationed in MCAS Futenma as well as the implementation of thorough safety management given the current situation with the series of their incidents and troubles.

Returned land on the East side of Futenma Air Station



On July 2017, the East side of Futenma Air Station land (Approx. 4ha) was returned. Many local residents, Japanese governments and U.S. Military's we're in attendance for the Land Return Ceremony and Reception. The long-awaited return of the land is a step towards the future of Ginowan City and we believe that it is a guide to the full return of the land which has been planned to be returned which in turn will improve the city roads thus alleviating chronic congestion. (Start schedule 2019)



Estimated the economic impact of the Base Site for the Future

	Direct impact by Survey hundred million yen	Direct impact by economic revenue hundred million yen		
	After return of the Base Site	Before return of the Base Site	After return of the Base Site	Percentage of increased revenue
Camp Kuwae	719	40	334	735%
Camp Zukeran	1,938	109	1,061	873%
MCAS Futenma	5,027	120	3,866	3122%
Makiminato Service Area	3,143	202	2,564	1169%
Naha port	943	30	1,076	3487%
Total	11,770	501	8,900	1677%

Preparing for the land return of MCAS Futenma...

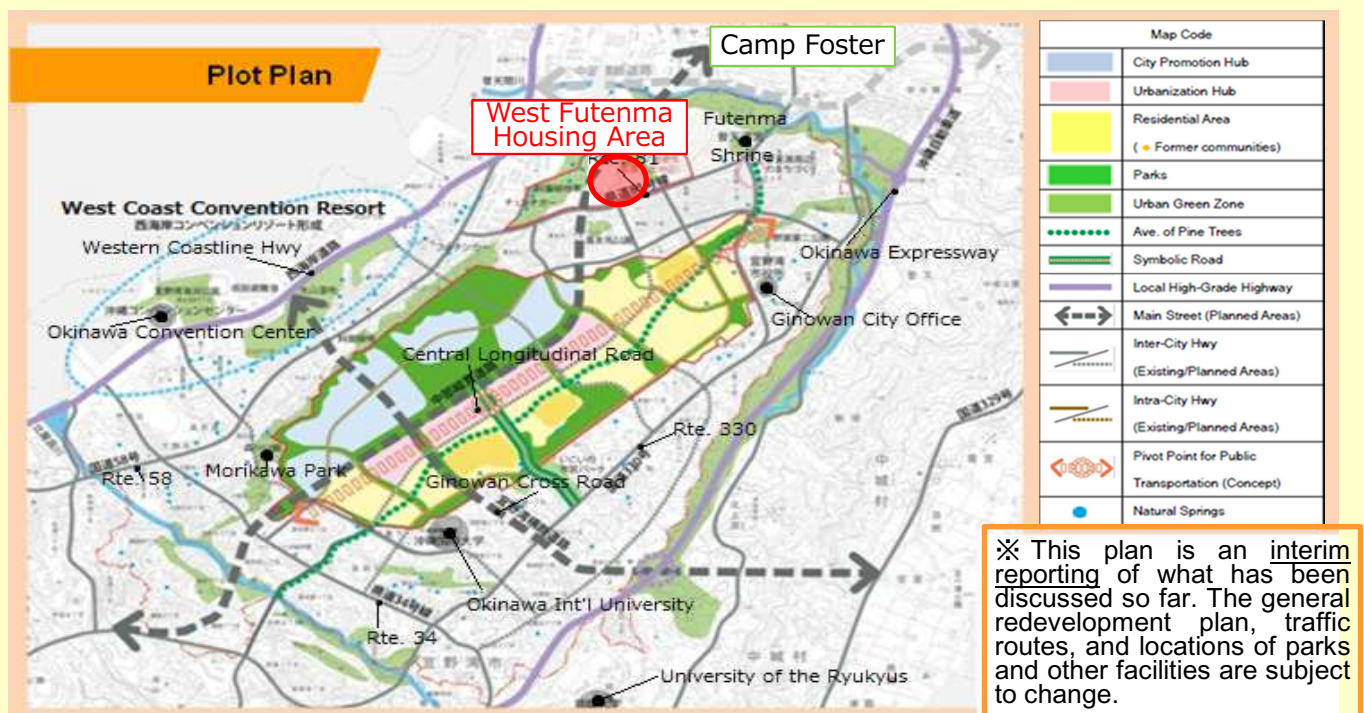


Image View

